

THIS INSTRUMENT PREPARED BY
 DAVID P. LINDLEY
 OF
CAULFIELD and WHEELER, INC.
 SURVEYORS - ENGINEERS - PLANNERS
 7900 GLADES ROAD, SUITE 100
 BOCA RATON, FLORIDA 33434 - (561)392-1991

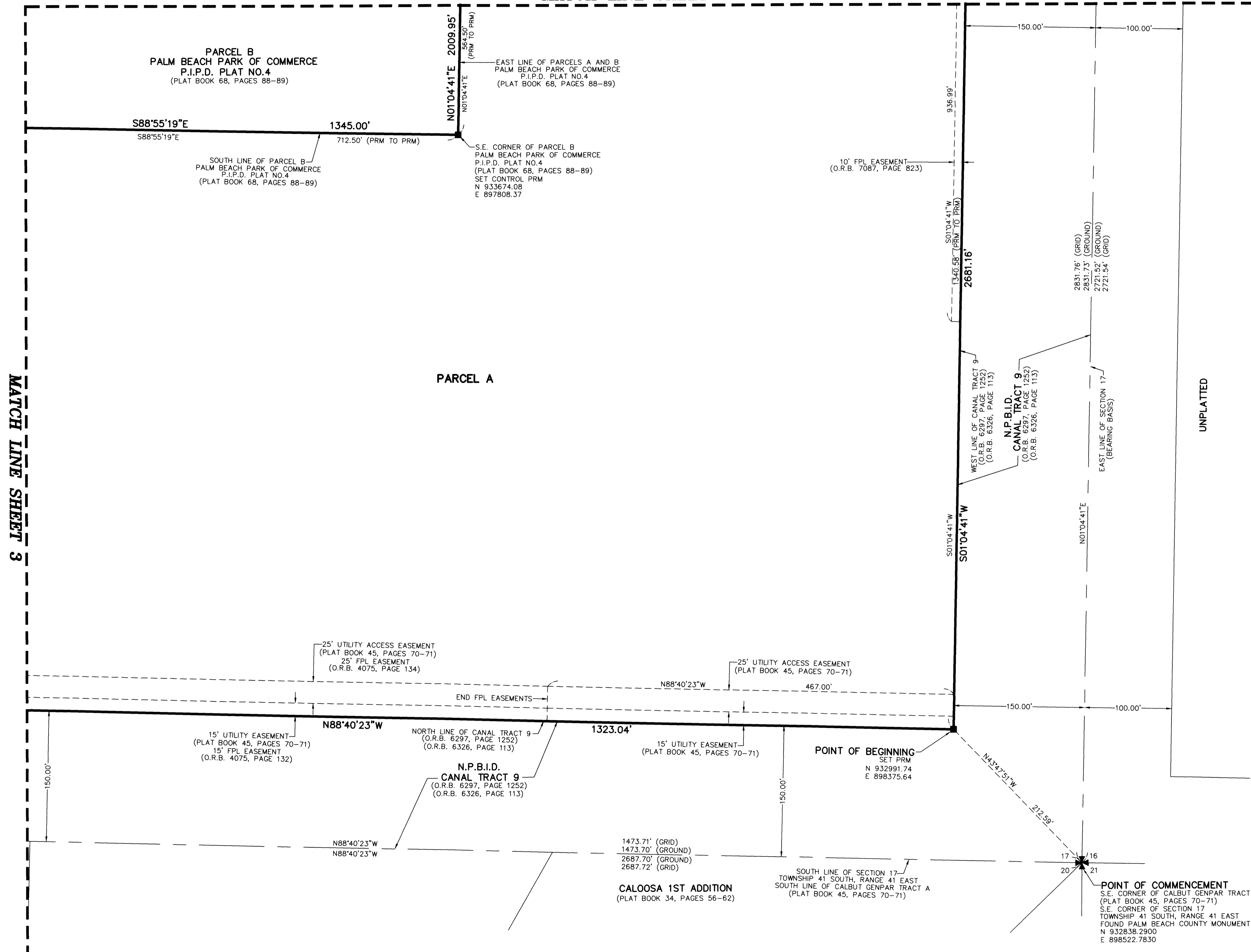
PALM BEACH PARK OF COMMERCE P.I.P.D. PLAT NO. 17

BEING A REPLAT OF A PORTION OF CALBUT GENPAR TRACT A,
 AS RECORDED IN PLAT BOOK 45, PAGES 70 AND 71 AND A PORTION OF DONALD ROSS ROAD,
 PALM BEACH PARK OF COMMERCE, P.I.P.D., PLAT NO. 4, AS RECORDED IN PLAT BOOK 68, PAGES 88 AND 89
 ALL OF THE PUBLIC RECORDS OF PALM BEACH COUNTY, FLORIDA,
 TOGETHER WITH A PORTION OF SECTION 17, TOWNSHIP 41 SOUTH, RANGE 41 EAST, PALM BEACH COUNTY, FLORIDA,
 ALL LYING IN SECTION 17, TOWNSHIP 41 SOUTH, RANGE 41 EAST, PALM BEACH COUNTY, FLORIDA

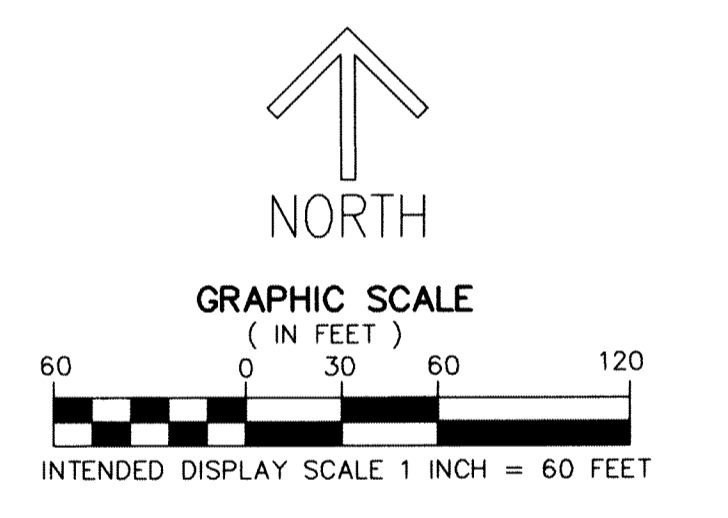
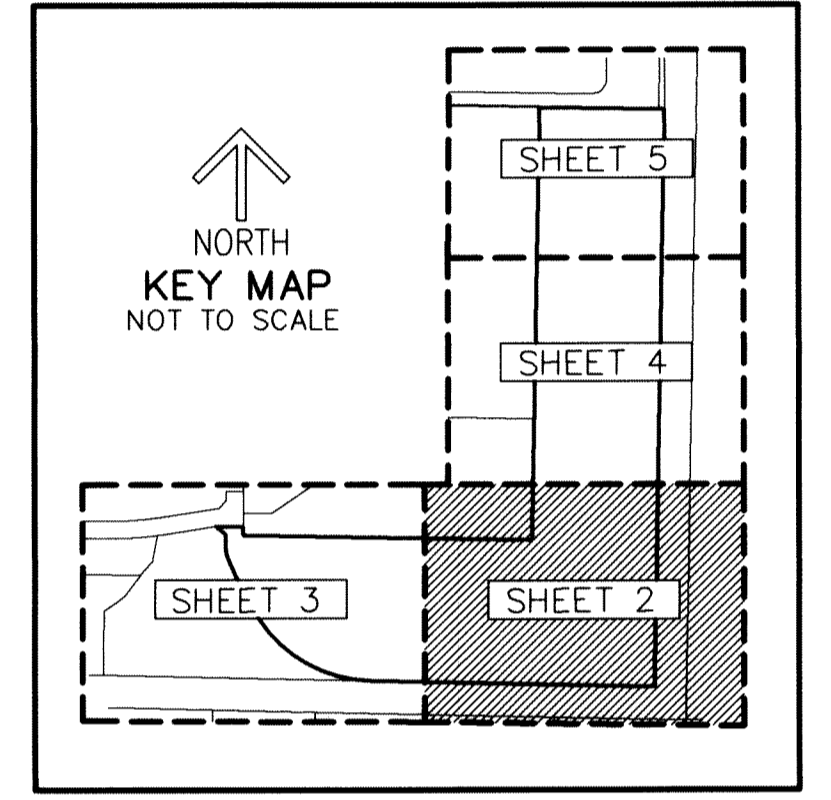
182

SHEET 2 OF 5

MATCH LINE SHEET 4



MATCH LINE SHEET 3



NOTES
COORDINATES, BEARINGS AND DISTANCES
 COORDINATES SHOWN ARE GRID
 DATUM = NAD 83 1990 ADJUSTMENT
 ZONE = FLORIDA EAST
 LINEAR UNIT = US SURVEY FEET
 COORDINATE SYSTEM 1983 STATE PLANE
 TRANSVERSE MERCATOR PROJECTION
 ALL DISTANCES ARE GROUND UNLESS OTHERWISE NOTED
 SCALE FACTOR = 1.00000852
 GROUND DISTANCE X SCALE FACTOR = GRID DISTANCE
 BEARINGS AS SHOWN HEREON ARE GRID DATUM,
 NAD 83 1990 ADJUSTMENT, FLORIDA EAST ZONE.

LEGEND ABBREVIATIONS
 Δ - DELTA (CENTRAL ANGLE)
 L - ARC LENGTH
 R - RADIUS
 CB - CHORD BEARING
 CD - CHORD DISTANCE
 FPL - FLORIDA POWER & LIGHT CO.
 C - CENTERLINE
 LB - LICENSED BUSINESS
 O.R.B. - OFFICIAL RECORD BOOK
 N - NORTHING
 E - EASTING
 N.P.B.C.I.D. - NORTHERN PALM BEACH COUNTY
 IMPROVEMENT DISTRICT
 P.I.P.D. - PLANNED INDUSTRIAL PARK DEVELOPMENT
 (RWLDRR)-RIGHT-OF-WAY LINE DONALD ROSS ROAD
 UE - UTILITY EASEMENT
 ■ PRM - INDICATES SET 4" X 4" X 24" CONCRETE PERMANENT
 REFERENCE MONUMENT WITH ALUMINUM DISK
 STAMPED "PRM C&W LB3591" UNLESS OTHERWISE NOTED